



GRAND ANNIVERSARY M625



GRAND ANNIVERSARY M625

Model number: 76ANN16763CH19

3 beds • 2 baths • 1216 sq.ft. • 16' width • 76' depth

Our home building facilities invest in continuous product and process improvements. Plans, dimensions, features, materials, specifications and availability are subject to change without notice or obligation. Renderings and floor plans are representative likenesses of our homes and may differ from the actual homes. We invite you to tour a Home Center near you and inspect the highest value in quality housing available or call (252) 335-1070 to speak with a Home Consultant. Copyright 2017, CMH. All rights reserved.

<https://www.claytonelizabethcity.com>

**CLAYTON HOMES-
ELIZABETH CITY**

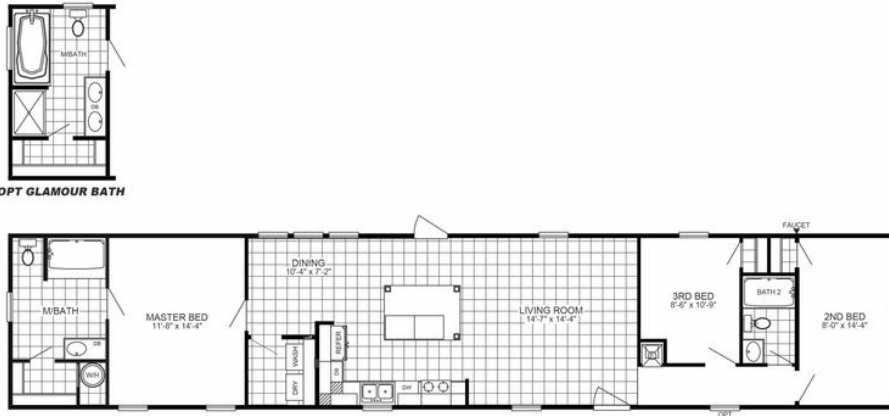
**1560 N ROAD STREET
ELIZABETH CITY, NC 27909**

Monday - Thursday: 9am to 6pm
Friday: 9am to 6pm
Saturday: 9am to 5pm
Sunday: Closed

(252) 335-1070



GRAND ANNIVERSARY M625



OPT GLAMOUR BATH

GRAND ANNIVERSARY M625 Model number: 76ANN16763CH19

3 beds • 2 baths • 1216 sq.ft. • 16' width • 76' depth

Our home building facilities invest in continuous product and process improvements. Plans, dimensions, features, materials, specifications and availability are subject to change without notice or obligation. Renderings and floor plans are representative likenesses of our homes and may differ from the actual homes. We invite you to tour a Home Center near you and inspect the highest value in quality housing available or call (252) 335-1070 to speak with a Home Consultant. Copyright 2017, CMH. All rights reserved.

<https://www.claytonelizabethcity.com>

CLAYTON HOMES- ELIZABETH CITY

1560 N ROAD STREET
ELIZABETH CITY, NC 27909

Monday - Thursday: 9am to 6pm
Friday: 9am to 6pm
Saturday: 9am to 5pm
Sunday: Closed

(252) 335-1070